



MISTORIA
ESTATE AGENTS



49 Elswick Street Liverpool

£750 PCM

Welcome to this charming modern terraced house located on Elswick Street in the vibrant city of Liverpool. This delightful property offers a comfortable living space, perfect for individuals or small families seeking a convenient and stylish home.

With a total area of 624 square feet, the house features a spacious reception room that provides an inviting atmosphere for relaxation and entertaining. The well-appointed kitchen is designed for practicality, making meal preparation a pleasure.

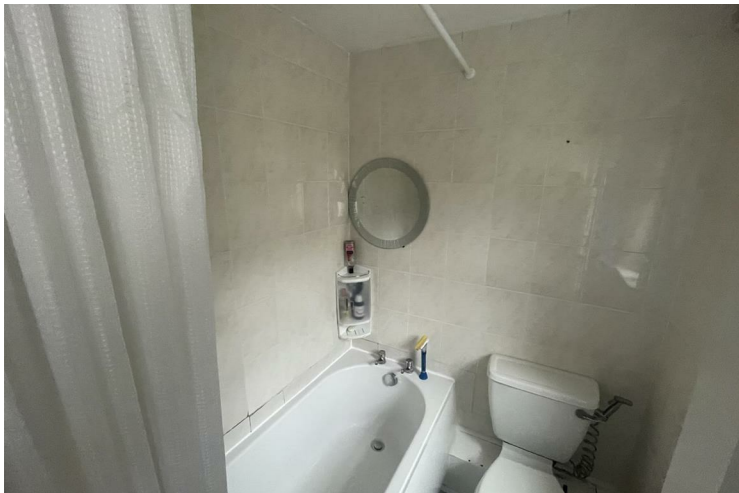
The property boasts two generously sized bedrooms, each offering ample natural light and space for personalisation. The modern bathroom is equipped with contemporary fixtures, ensuring a refreshing experience.

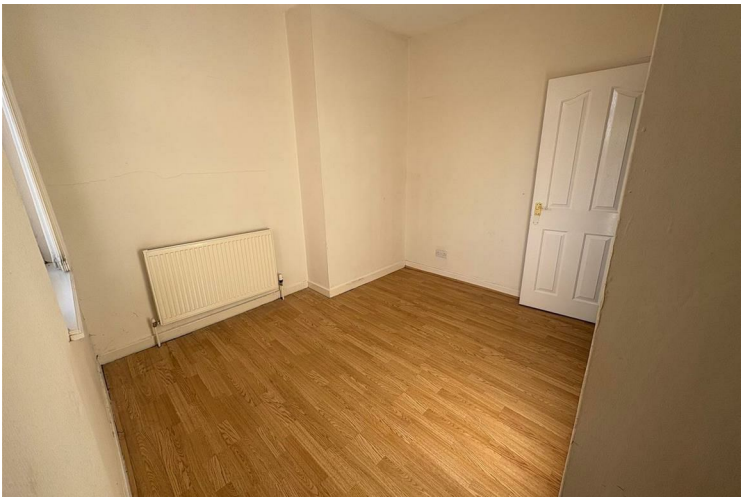


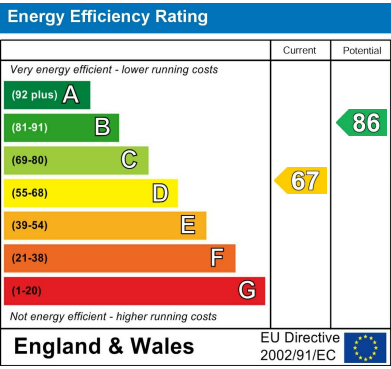
- Close to city centre • Large 2 bedroom

Disclaimer

Disclaimer: The information and images provided in this property advertisement are intended for guidance purposes only. While we make every effort to ensure the accuracy of the details, we strongly recommend that interested parties view the property in person to confirm the property's condition and suitability for their specific requirements. The photographs used in this advertisement may have been digitally enhanced and may not accurately represent the current condition of the property. Any measurements or distances provided are approximate and should not be relied upon for any purpose. Furthermore, the description and details provided are based on the landlord's understanding and may be subject to change without notice. Prospective tenants are advised to verify any specific details that are important to them before entering into any agreement. We do not accept any liability for any loss or damage, whether direct or indirect, arising from reliance upon the information provided in this advertisement. We strongly advise all parties to seek professional advice and conduct their own due diligence before making any decisions or commitments related to this property. By viewing this advertisement, you agree to the above disclaimer and acknowledge that any reliance on the information provided is at your own risk. Please note that this disclaimer is subject to change and may be updated without prior notice







Agents Note: Whilst every care has been taken to prepare these particulars, they are for guidance purposes only. All measurements are approximate and are for general guidance purposes only and whilst every care has been taken to ensure their accuracy, they should not be relied upon and potential buyers/tenants are advised to recheck the measurements

Pall Mall Liverpool Mistoria
22 Pall Mall
Liverpool
L3 6AL

0151 282 1539
info@mistoria.co.uk
mistoria.co.uk

